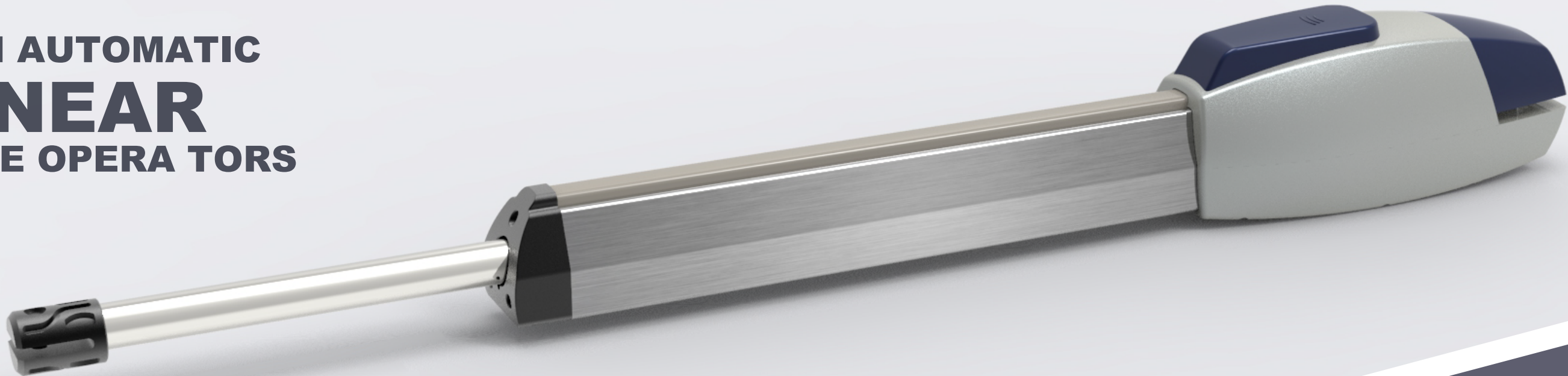


ARM AUTOMATIC  
**LINEAR**  
GATE OPERATORS



L9

Technical specifications

	L9-1-24	L9-1-220	L9-2-24	L9-2-220
Power supply	220VAC/50Hz			
Electric motor	24V	220V	24V	220V
Absorbeb power	70W	320W	70W	320W
Current	5.2A	1.5A	5.2A	1.5A
Motor speed	1800RPM	1450RPM	1800RPM	1450RPM
Thrust	1800N	2800N	1800N	2800N
Travel	400m		600m	
Protection Class	IP45			
Temperature	-20°c-50°c			
Max wight	300kgs	500kgs	300kgs	500kgs
Max width	2.5m	3.5m	3m	4m

Reliability and  
durability over time

thanks to the housing, made up of two tough aluminium housing with powder paint finish , more resistant to atmospheric agents. Internal gear is made by bronze ideal for intensive work load, can work on heavy duty and large size gate.