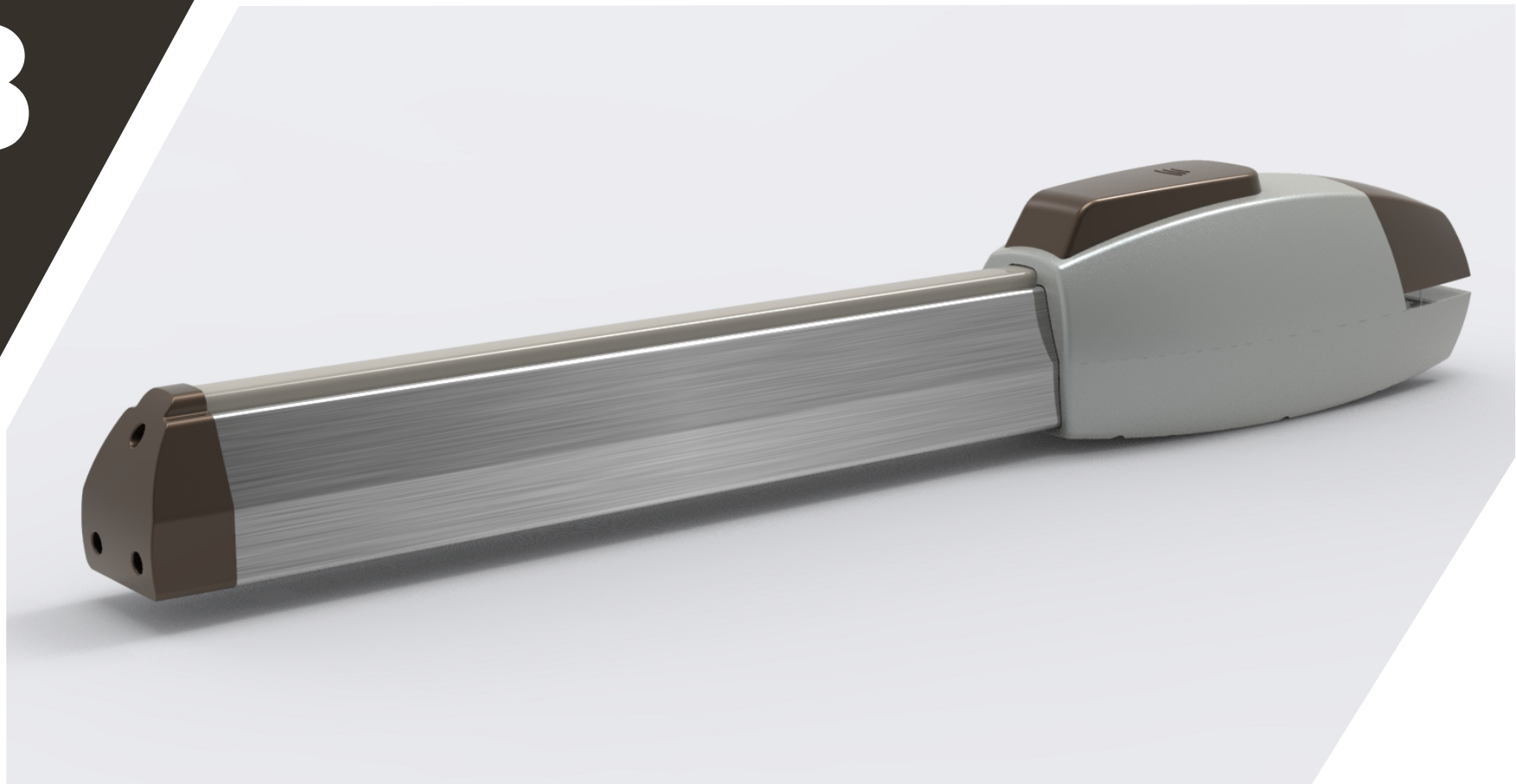
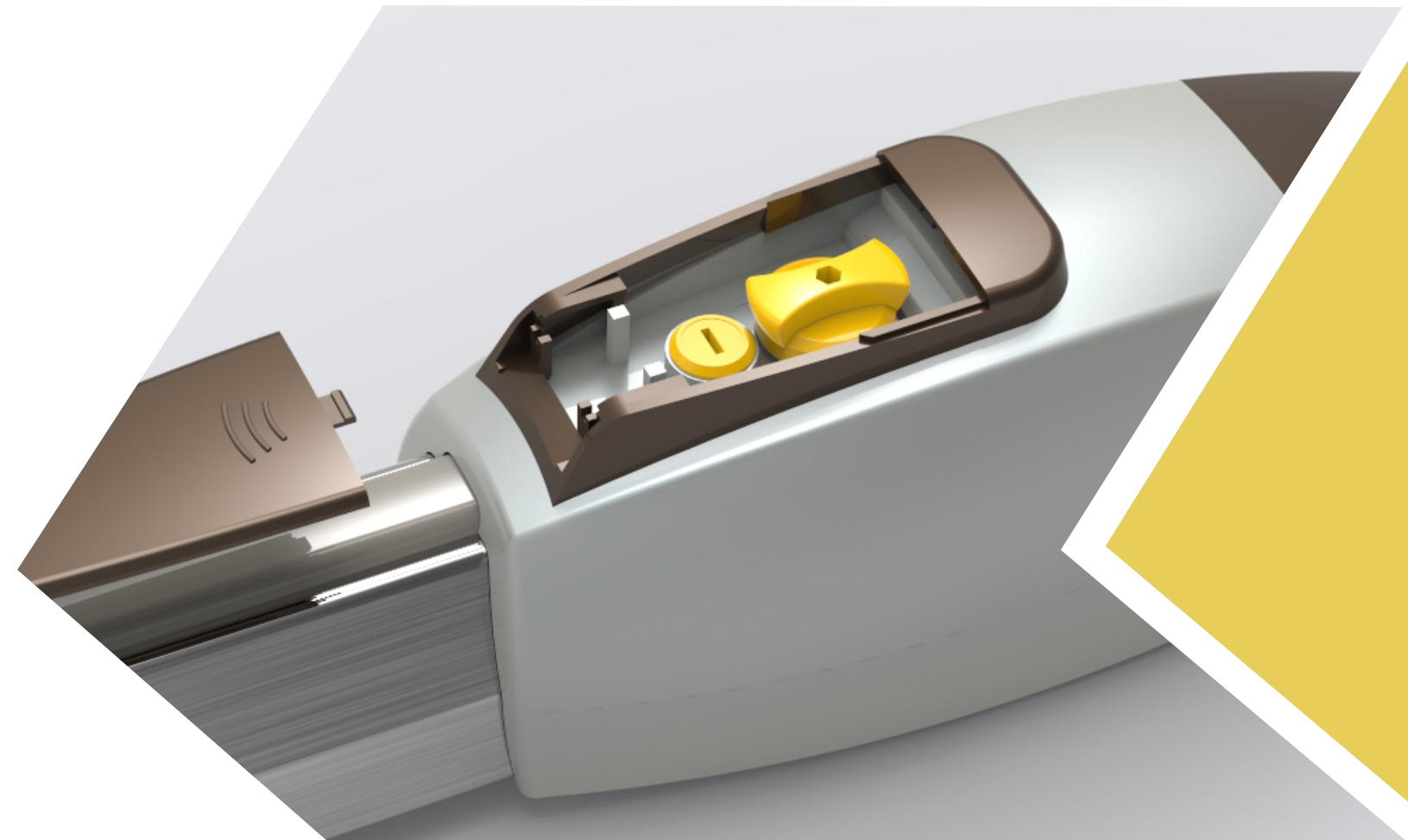


L8



**ELECTRIC LIMIT SWITCH**  
easy to adjust stroke  
Work silent and move smoothly  
easy to release in emergency case

## ARM AUTOMATIC LINEAR GATE OPERATORS



Technical specifications				
	LB-1-24	LB-1-220	L8-2-24	L8-2-220
Power supply	220VAC/50Hz			
Electric motor	24V	220V	24V	220V
Absorbeb power	70W	320W	70W	320W
Current	5.2A	1.5A	5.2A	1.5A
Motor speed	1800RPM	1450RPM	1800RPM	1450RPM
Thrust	1800N	2800N	1800N	2800N
Travel	400m		600m	
Protection Class	IP45			
Temperature	-20°C-50°C			
Max wight	300kgs	500kgs	300kgs	500kgs
Max width	2.5m	3.5m	3m	4m