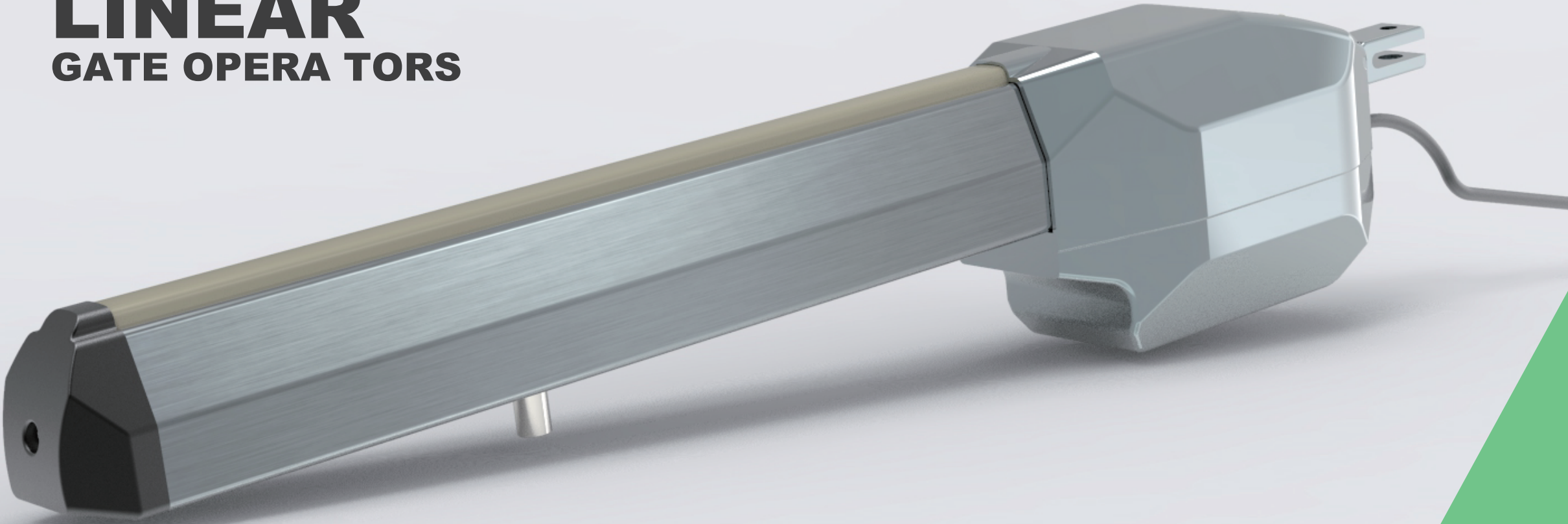


ARM AUTOMATIC  
**LINEAR**  
GATE OPERATORS



Technical specifications	
Power supply	230VAC/50Hz
Electric motor	220V
Absorbeb power	320W
Current	1.5A
Motor speed	1450RPM
Thrust	3000N
Travel	12s
Protection Class	IP45
Temperature	-20°c-50°c
Max wight	500kg
Max width	3m

**L6**

**Super powerful**

Super strong operator, designed for heavy and oversize gate,

**East to install**

Built-in limit switch and capacitor , easy to install

**Low noise**

Low noise based on High quality material and precise production

**Wide range of temperature**

Can work at -40-50 degrees