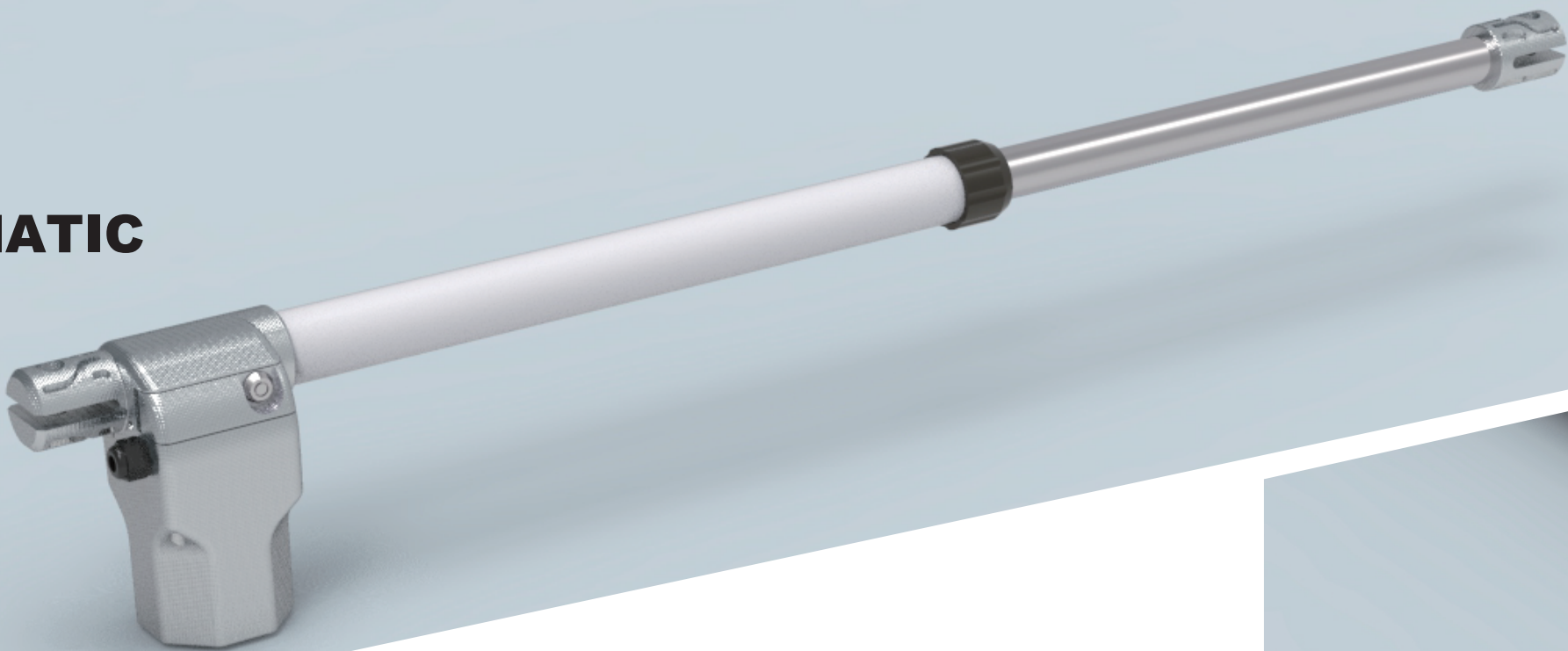


L5

ARM AUTOMATIC

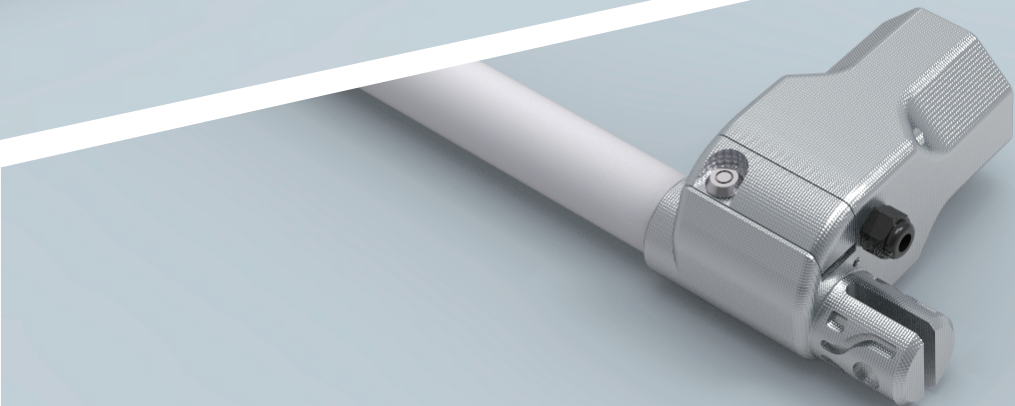


LINEAR

GATE OPERATORS

Self locking drive

- Force regulation via control board
- High torque for heavy and over-size gate
- Release handle make it easy to manual override
- Low noise based on High quality material and precise production
- Customized key for enhanced security



Technical specifications				
	L5-1-24	L5-1-220	L5-2-24	L5-2-220
Power supply	220VAC/50Hz			
Electric motor	24V	220V	24V	220V
Absorbeb power	70W	320W	70W	320W
Current	5.2A	1.5A	5.2A	1.5A
Motor speed	1800RPM	1450RPM	1800RPM	1450RPM
Thrust	1800N	2800N	1800N	2800N
Travel	400m		600m	
Protection Class	IP45			
Temperature	-20°C-50°C			
Max wight	500kg			
Max width	2.5m	3.5m	3m	4m