

L1

ARM AUTOMATIC LINEAR GATE OPERATORS

Low noise, high reliability, need less space

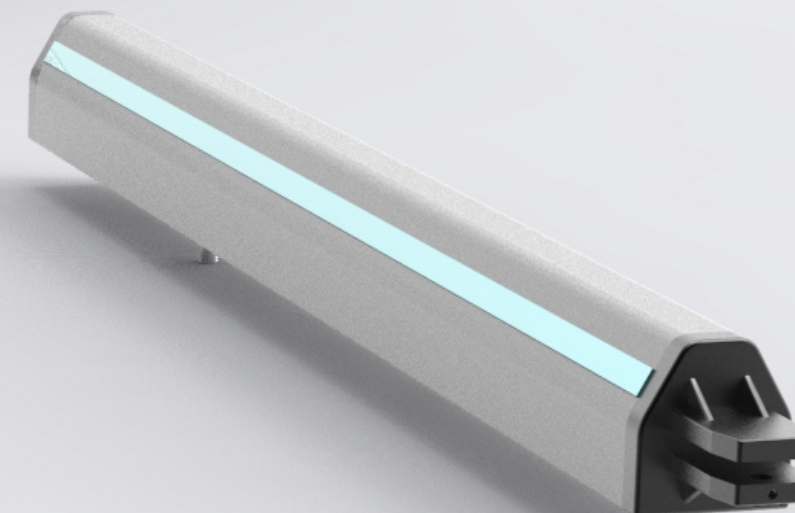
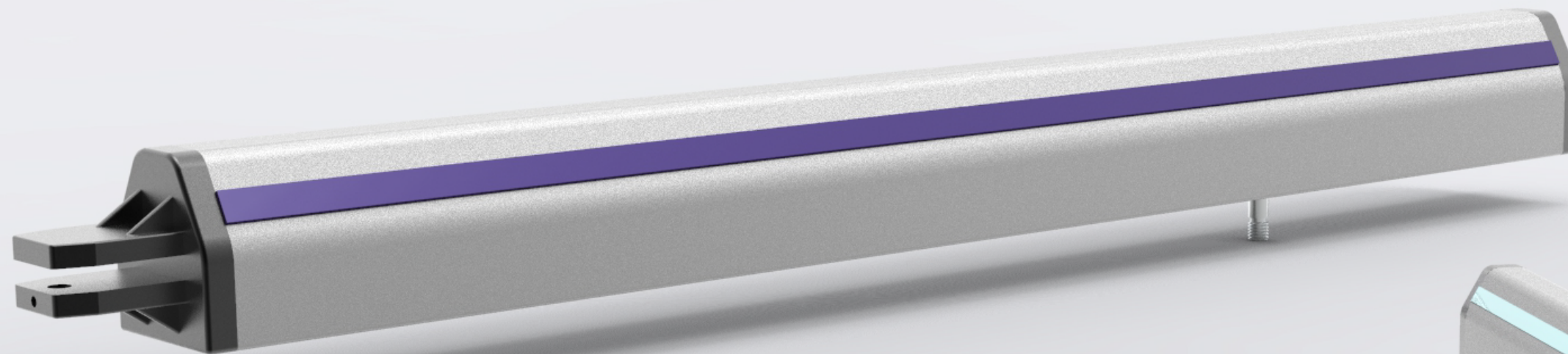
Use fewer parts, coupled with low noise drive motor.
Quite and reliable operation in range of -20°C - +50°C
Compact shape, can be installed in the narrow space applications.

Limit stop and Release

Built in limit stopper to adjust the stroke
Release switch, manually open in emergency situations

Technical specifications

Power supply	230VAC/50Hz
Electric motor	12V
Absorbeb power	12W
Current	2A
Motor speed	4500RPM
Thrust	350N
Travel	12s
Protection Class	IP45
Temperature	-20°C-50°C
Max wight	200kg
Max width	2.5m



Safe and reliable home automation system

Built-in gear motor and protection equipment.
Galvanized steel metal parts, powder coated housing to prevent corrosion and rust.