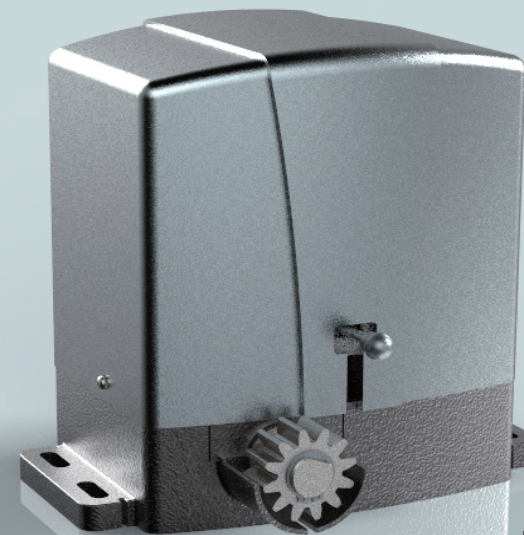


SYATE/IJ FOR  
**AUTOMATED**  
SLIDING GATE



# S4

## Irreversible

Huge selection of operating logics and working parameters.  
Compact dimensions.  
It can operate in emergency mode during power outages.  
Self-diagnosing safety devices  
Absolutely waterproof

Technical specifications		
	S1-12	S1-220
Power supply	230VAC/50Hz	230VAC/50Hz
Electric motor	12V	220V
Absorbeb power	120W	380W
Current	8A	1.7A
Motor speed	1800RPM/min	1450RPM/min
Thrust	MAX350N	MAX550N
Travel	12m/min	12m/min
Protection Class	IP44	IP44
Temperature	-2o°c-5o°c	-2o°c-5o°c
Max wight	500kg	700kg
Duty cycle	80%	40%