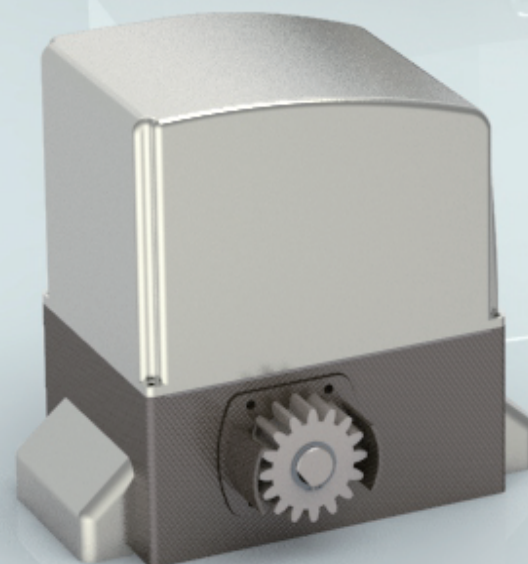


# S3

SYATE/IJ FOR

## AUTOMATED

SLIDING GATE



### Perfectly waterproof

complying with current Standards on impact forces.  
can operate in emergency mode during power outages.  
Self-diagnosing, self-learning strike  
Control board, with separate terminals and function-setting

### dip-switches

On-board rolling code decoding.  
Complete movement control and effective reverse on obstacle

### response

Magnetic Limit Switches

#### Technical specifications

	S3-12	S3-220
Power supply	230VAC/50Hz	230VAC/50Hz
Electric motor	12V	220V
Absorbeb power	120W	380W
Current	8A	1.7A
Motor speed	1800RPM/min	1450RPM/min
Thrust	MAX350N	MAX550N
Travel	12m/min	12m/min
Protection Class	IP44	IP44
Temperature	-20°C-50°C	-20°C-50°C
Max wight	500kg	700kg
Duty cycle	80%	40%