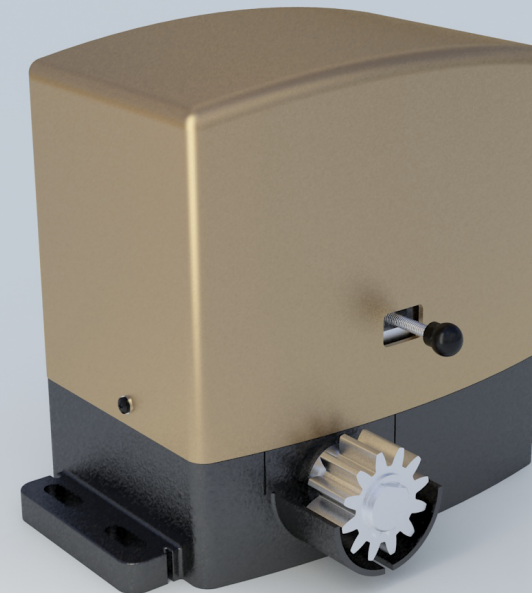


S1

SYATEM FOR
AUTOMATIC
SLIDING GATE



Irreversible

Motor irreversible, so no need to install power locks, power outage, the key can be used to pro a special rotating release device, manually operated control gates, steel and plastic rack gear rack or galvanized, to ensure that in a variety of adverse conditions normal operation, the ext-emal material oxidation corrosion, suitable for any outdoor climate.

Simple and reliable home automation system

S1 Set indudes a built—in electric gear motors and wiring control panels and protection devices, accelerated the installation of speed, reduced costs, making installation more convenient, you can drive weighs up to 1000KG .

Safe and reliable

Independent electronic control plastic prote -cllve case to ensure that the circuit boards from insects, dust rain, etc., and ensure lasting, safe anti-colisionprotection is provided by the built-in current sensor to protect the motor from damage In case of an accident.

Low noise

S1 structure high precision, after repeated eximents continue to improve, continue to explore parts processing technology, the overall noise can achieve a very satisfactory result, S1 designed and manufactuedin accordance with European standards, reliable quality assurance.

Technical specifications

	S1-12	S1-220
Power supply	230VAC/50Hz	230VAC/50Hz
Electric motor	12V	220V
Absorbeb power	120W	380W
Current	8A	1.7A
Motor speed	1800RPM/min	1450RPM/min
Thrust	MAX350N	MAX550N
Travel	12m/min	12m/min
Protection Class	IP44	IP44
Temperature	-20°c-50°c	-20°c-50°c
Max wight	500kg	700kg
Duty cycle	80%	40%